

## 2013 GMSI Summer Camp Schedule

### Friday, September 27

---

13:30–17:00      Lab tours at the University of Tokyo

### Saturday, September 28

---

**8:45                  Depart from outside of Engineering Bldg#2, the University of Tokyo**

11:30                Arrive at Sportia YAMANAKA

12:00–13:00      Lunch

13:00–13:30      Opening

13:30–14:30      Technical sessions

14:30–17:00      Team meetings

18:00–19:00      Dinner

19:30–21:30      Team meetings (optional)

### Sunday, September 29

---

7:30–8:50        Breakfast

9:00–12:00      Team meetings

12:00–13:00      Lunch

16:00–18:00      Final Presentation

19:00–21:00      Award Ceremony & Banquet

### Monday, September 30

---

7:30–8:50        Breakfast

**9:30                  Checkout – clear the room and gather in the lobby**

10:00                Departing for Japanese cultural experience

11:00–12:00      Japanese cultural experience

12:00–13:00      Lunch

13:00–14:00      Closing

14:00–17:30      Return to Tokyo (Arrival time may vary due to traffic conditions)

### Emergency Contacts:

Dr. Harada    080-2565-4158

Dr. Maeda    090-3620-2294

or send email to [sc2013@pcil.t.u-tokyo.ac.jp](mailto:sc2013@pcil.t.u-tokyo.ac.jp)

<important> Bus will leave on schedule if you do not contact.

### Important Notice:

**Please do NOT get on boats and do NOT swim in Yamanaka.**

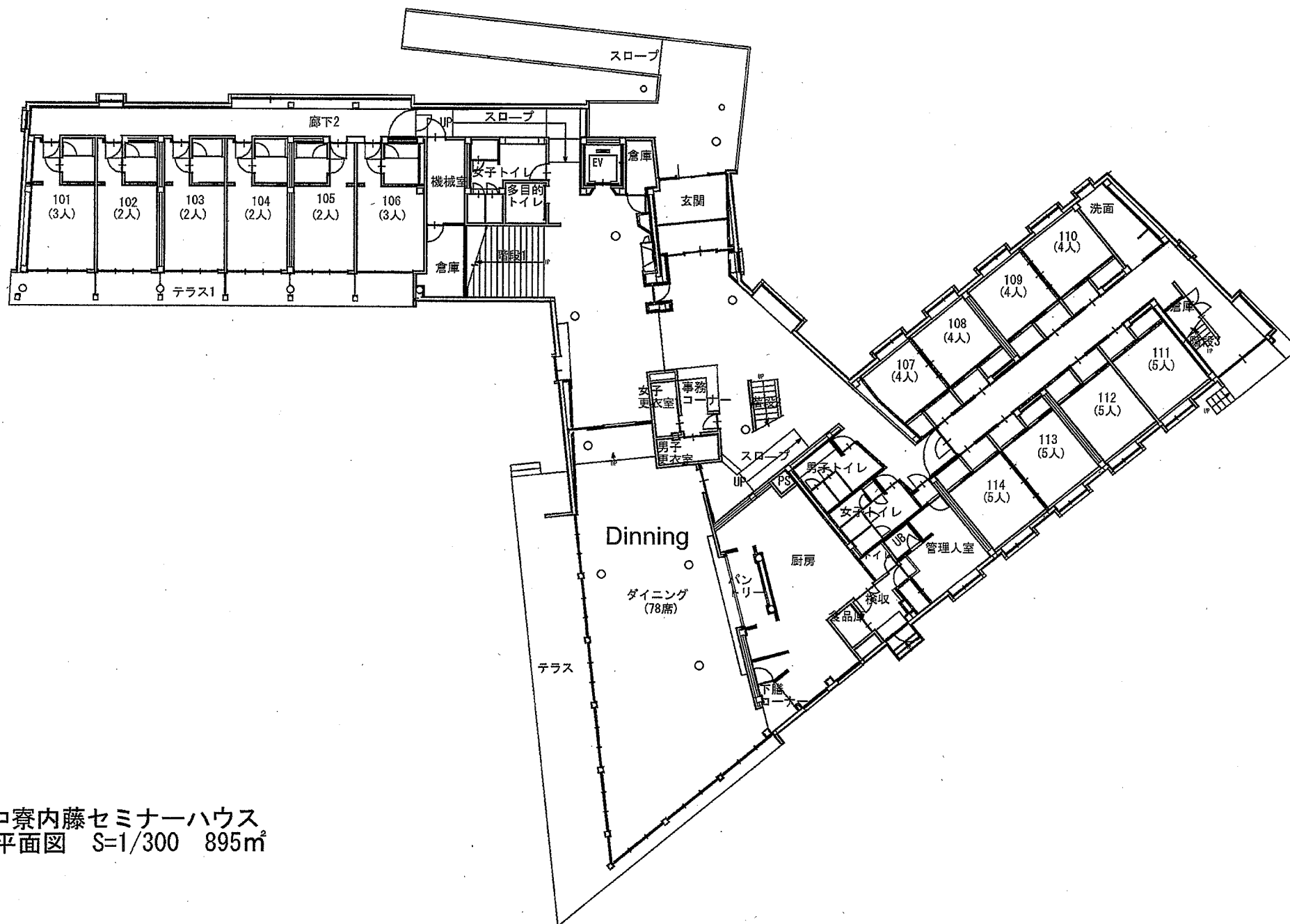
# Teams

Energy			Lab Tour Group <u>Alpha</u>
Xiaowei He	Rice University	Electrical and Computer Engineering	
Jungwan Cho	Stanford University	Mechanical Engineering	
Qianyan Fu	The University of Tokyo	Mechanical Engineering	
Naoto Fujiwara	The University of Tokyo	Mechanical Engineering	
Wendi Li	The University of Tokyo	Material Engineering	
Takafumi Oyake	The University of Tokyo	Mechanical Engineering	
Environment			Lab Tour Group <u>Alpha</u>
Ghidewon Arefe	Columbia University	Mechanical Engineering	
Seok Kim	Korea Advanced Institute of Science and Technology	Mechanical Engineering	
Yusuke Funakoshi	The University of Tokyo	Aeronautics and Astronautics	
Yaerim Lee	The University of Tokyo	Mechanical Engineering	
Taku Niino	The University of Tokyo	Materials Engineering	
Ryoichi Ohta	The University of Tokyo	Applied Chemistry	
Shiwei Wang	Tsinghua University	Precision Instruments	
Health & Welfare			Lab Tour Group <u>Beta</u>
Francesca Mulana	Scuola Superiore Sant' Anna	BioRobotics Institute	
Yannan Feng	The University of Tokyo	Materials Engineering	
Toru Kizaki	The University of Tokyo	Mechanical Engineering	
Duc Huynh Tien Le	The University of Tokyo	Chemical System Engineering	
Shinichi Tanaka	The University of Tokyo	Mechanical Engineering	
Zi Jing Wong	University of California, Berkeley	Mechanical Engineering	
Christian Abawi	University of Stuttgart	Mechanical Engineering	
Information Technology			Lab Tour Group <u>Beta</u>
Bitu Daemi	Royal Institute of Technology, KTH	Production Engineering	
Mattias Traeger	Technische Universität München	Micro Technology and Medical Device Technology	
Yangjin Kim	The University of Tokyo	Mechanical Engineering	
Takashi Matsumae	The University of Tokyo	Precision Engineering	
Taro Onoe	The University of Tokyo	Precision Engineering	
Yu Uriya	The University of Tokyo	Mechanical Engineering	
Safety & Security			Lab Tour Group <u>Beta</u>
Taejin Kim	Seoul National University	Mechanical and Aerospace Engineering	
Takayuki Iida	The University of Tokyo	Chemical System Engineering	
Noriana Mohd Abbas	The University of Tokyo	Precision Engineering	
Makoto Shinohara	The University of Tokyo	Mechanical Engineering	
Jing Yang	The University of Tokyo	Mechanical Engineering	
Lei Yao	Tsinghua University	Materials Science and Engineering	
Megan Hostetter	University of Tronto	Materials Science and Engineering	

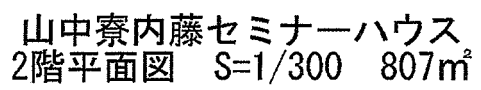
## Room Information at Yamanaka

	Name	Affiliation	
<b>Room# 109</b>	Yaerim Lee	The University of Tokyo	Mechanical Engineering
	(4) Francesca Mulana	Scuola Superiore Sant' Anna (SSSA)	BioRobotics Institute
	Megan Hostetter	University of Tronto	Materials Science and Engineering
<b>Room# 110</b>	Lei Yao	Tsinghua University	Materials Science and Engineering
	(4) Bitu Daemi	Royal Institute of Technology, KTH	Production Engineering
	Norliana Mohd Abbas	The University of Tokyo	Precision Engineering
<b>Room# 205</b>	Taejin Kim	Seoul National University	Mechanical and Aerospace Engineering
	(4) Jing Yang	The University of Tokyo	Mechanical Engineering
	Yusuke Funakoshi	The University of Tokyo	Aeronautics and Astronautics
	Takayuki Iida	The University of Tokyo	Chemical System Engineering
<b>Room# 107</b>	Seok Kim	Korea Advanced Institute of Science and Technology	Mechanical Engineering
	(4) Yunnan Feng	The University of Tokyo	Materials Engineering
	Takashi Matsumae	The University of Tokyo	Precision Engineering
	Toru Kizaki	The University of Tokyo	Mechanical Engineering
<b>Room# 108</b>	Ghidewon Arefe	Columbia University	Mechanical Engineering
	(4) Shiwei Wang	Tsinghua University	Precision Instruments
	Taku Niino	The University of Tokyo	Materials Engineering
<b>Room# 111</b>	Zi Jing Wong	University of California, Berkeley	Mechanical Engineering
	(5) Yangjin Kim	The University of Tokyo	Mechanical Engineering
	Wendi Li	The University of Tokyo	Material Engineering
	Takafumi Oyake	The University of Tokyo	Mechanical Engineering
<b>Room# 112</b>	Mattias Traeger	Technische Universität München	Institute of Micro Technology and Medical Device Technology(MIMED)
	(5) Makoto Shinohara	The University of Tokyo	Mechanical Engineering
	Qianyan Fu	The University of Tokyo	Mechanical Engineering
	Ryoichi Ohta	The University of Tokyo	Applied Chemistry
<b>Room# 113</b>	Xiaowei He	Rice University	Electrical and Computer Engineering
	(5) Christian Abawi	The University of Tokyo	Mechanical Engineering
	Yu Uriya	The University of Tokyo	Mechanical Engineering
	Taro Onoe	The University of Tokyo	Precision Engineering
<b>Room# 114</b>	Jungwan Cho	Stanford University	Mechanical Engineering
	(5) Duc Huynh Tien Le	The University of Tokyo	Chemical System Engineering
	Shinichi Tanaka	The University of Tokyo	Mechanical Engineering
	Naoto Fujiwara	The University of Tokyo	Mechanical Engineering

	Name	Affiliation	
<b>Room# 101</b>	Dr. Kanako Harada	The University of Tokyo	Dept. of Mechanical Engineering
<b>Room# 102</b>	Dr. Etsuo Maeda	The University of Tokyo	Dept. of Mechanical Engineering
<b>Room# 103</b>	Dr. Shusuke Kasamatsu	The University of Tokyo	The Institute for Solid State Physics
<b>Room# 104</b>	Dr. Daichi Wada	The University of Tokyo	Dpt. of Technology Management for Innovation
<b>Room# 105</b>	Dr. Daisuke Hirai	The University of Tokyo	Department of Physics
<b>Room# 201</b>	Prof. Shigeo Maruyama	The University of Tokyo	Dept. of Mechanical Engineering
<b>Room# 202</b>	Prof. Satoshi Watanabe	The University of Tokyo	Dept. of Materials Engineering
<b>Room# 203</b>	Prof. Yasuyuki Yokono	The University of Tokyo	Dept. of Mechanical Engineering
<b>Room# 204</b>	Prof. Mamoru Mitsuishi	The University of Tokyo	Dept. of Mechanical Engineering



山中寮内藤セミナーハウス  
1階平面図 S=1/300 895m<sup>2</sup>



↑ 至 吉田ルート（登山道）  
To Yoshida Trail (Ascending Route)

# 富士山五合目案内図 Mt.Fuji 5th Sta. Guide Map

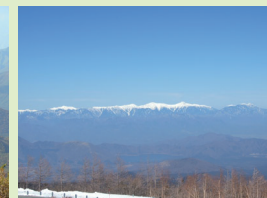


## 富士山五合目のみどころ 5th Sta. View Points

📷1 展望広場から  
from Observation Area

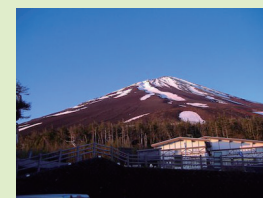


本栖湖  
Lake Motosuko



南アルプス連峰  
Southern Alps Peaks

📷2



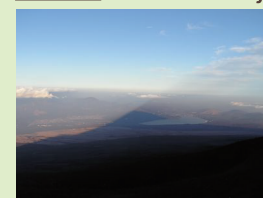
富士山山頂方面  
to Mt. Fuji Summit

📷3



富士山五合目道標  
Guidepost of Mt.Fuji 5th Sta.

📷4 スカイパレス展望台から  
from Ovservatory at Sky Palace



影富士と山中湖  
Shadow of Mt.Fuji & Lake Yamanakako

📷5



小御嶽神社  
Komitake Shrine

📷6



五合目総合管理センター  
5th sta. General Management Center

### 凡 例 Legend

- 📍 案内所  
Information
- 🚻 お手洗い  
Toilet
- P 駐車場  
Parking
- ♿ 身障者専用駐車場  
Parking for handycapped people
- 🚌 バス停  
Bus Stop
- TAXI タクシー乗り場  
Taxi Stand
- 🐎 駐馬場  
Hourse Stand
- 👤 展望台  
Observatory
- 🍴 レストラン  
Restaurant
- ☕ 喫茶  
Cafe
- 🛍️ 売店・おみやげ  
Shop・Souvenir